

Outdoor Recreation Facilities Inventory

Allouez Neighborhood Parks:

East Lawn Park (4.90 acres) is located in the northeastern corner of Allouez near Boyd Street.

This site contains:

- Baseball diamond with backstop
- Half-court basketball area
- Tennis court
- Playground equipment
- Picnic tables
- Shelter / restroom building
- Parking lot
- Boat / canoe launch
- Paved trails



Kiwanis Park (38.30 acres) is located on East River Drive in the southwestern part of Allouez. This site contains:

- (2) tennis courts
- Half-court basketball area
- (3) soccer fields
- Pickleball courts
- Playground equipment
- Shelter / restroom building
- Drinking water
- Picnic tables
- Parking lot
- Fishing pier
- Benches
- Paved trails



Langlade Park (6.00 acres) is located in the central part of Allouez next to the Broadview YMCA and Langlade Elementary School. This site is accessed through the YMCA and Langlade school parking lots and an easement from Terraview Drive. Recreation facilities include:

- Softball diamond
- (2) tennis courts
- Half-court basketball area
- Playground equipment
- Shelter / restroom building
- Picnic area with tables
- Ice skating rink
- Off-street parking



Allouez Neighborhood Parks:

Optimist Park (10.20 acres) is located on the southwest corner of the intersection of East Kalb Avenue and Libal Street in the northern part of the village. This park contains:

- Resch Miracle League ball diamond with bleachers
- Favre Family Miracle Recreation Area
- Shelter / restrooms / concession stand
- Drinking water
- Playground with rubber surfacing
- Picnic area with benches
- Parking lot



Sunlight Park (2.30 acres) is located in the southwestern part of Allouez along Park Drive between Arrowhead Drive and St. Francis Drive. An easement north of the park provides access from St. Mary's Boulevard. Recreational facilities include:

- Playground equipment
- Benches
- Picnic tables



Sunset Park (3.60 acres) is located in the southwestern part of Allouez between Sunset Circle and the Fox River. The park can be accessed from Sunset Circle or Fox River State Trail. This park contains only passive recreational opportunities.

- Benches
- Paved trails
- Picnic tables



Patrick Henry Martin Webster Park Sports Complex (15.40 acres) is located in the north-central portion of Allouez next to Webster School and accessed via Jourdain Lane and pedestrian easements from Floral Drive, Memory Court, and Brookridge Street. This site contains:

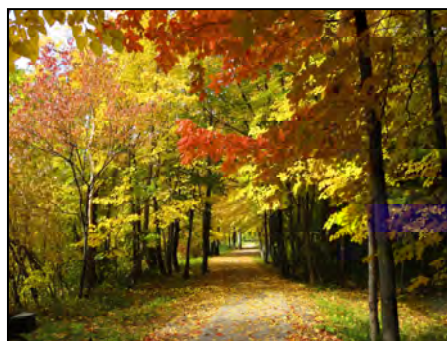
- Football field with lights
- (6) baseball diamonds (four with dugouts, two lighted, two with practice mounds)
- Batting cages
- (2) tennis courts
- Pickleball courts
- One half-court basketball area
- Playground
- Shelter / restroom building
- Concession stand with restrooms
- Drinking water
- Parking lot
- Sledding hill
- Benches
- Picnic tables



Community Parks:

Green Isle Park (51.40 acres) is the largest park in the Allouez park system. It is located north of Highway 172 between the East River and East River Drive. This site contains:

- Lighted baseball diamond with backstop and bleachers
- Lighted softball diamond with backstop and bleachers
- (4) tennis courts
- Basketball court
- Soccer/football field
- Volleyball courts
- (2) Playgrounds
- (2) gazebos
- (2) pavilions
- Concession stand with restrooms
- (3) storage buildings
- Bridge connection to Bellevue across East River
- Picnic area with grills and tables
- Shelter / restroom building
- Drinking water
- Benches
- (4) parking lots
- Athletic course
- Nature/cross country ski trails
- Canoe launch
- (3) fishing piers
- Part of the Resch Family East River Trail
- Ice skating in winter
- Event area



Special Use Areas:

Wiese Family Park (28.80 acres) is located in the southeast corner of the village and can be reached via Lebrun Road or the Resch Family East River Trail. This park meets the needs of trail users and soccer players and contains:

- (3) soccer fields
- (2) gazebos
- Benches
- Fishing pier
- Nature trail
- Paved trails
- Picnic tables
- Tree nursery
- Disc golf course
- Parking lot
- Portable restroom facilities



Broadview Soccer Complex (17.40 acres) is a sports complex located in the east-central portion of Allouez, south of State 172 between Libal Street and East River Drive. This site contains:

- (5) soccer fields
- Concession building with restrooms
- Picnic area with tables
- Drinking water
- (2) gravel parking lots



Riverview Park (17.50 acres) is located in the eastern part of Allouez south of Highway 172 between the East River and East River Drive. This site contains:

- (5) softball diamonds with bleachers
- Concessions building with restrooms
- Drinking water
- Fishing pier
- Benches
- Paved trails
- Picnic tables
- Parking lot
- Batting cages



Allouez Community Center (0.70 acres) is a special use facility that serves a broad range of community needs. Located on the corner of Webster Avenue and Dauphin Street, the building contains a multi-use room and kitchen.



Allouez Optimist Kayakers Point (0.10 acres) is located at the end of Lazarre Ave in the right-of-way. This site provides access to the Fox River for canoeists and kayakers. Amenities include:

- At grade kayak / canoe launch



Greenways / Trails:

Allouez Trail Connection (0.55 miles) This paved half-mile east-west trail connects the Fox River State Trail with Webster Avenue. It runs between Heritage Hill State Park and Highway 172.



East River Parkway (102.20 acres) A greenway is a natural open space system which typically ties parks system components together to form a continuous park environment. The East River Parkway area was identified and protected since the City of Green Bay's first plan in 1921. These lands were acquired to protect the East River floodplain and wetlands for flood control. The Village maintains a system of four storm water detention ponds within the East River Parkway, which helps to protect the river from pollutants.

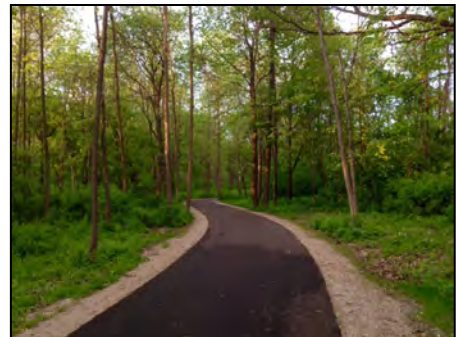


This site contains:

- Nature trails
- Open play space

Resch Family East River Trail (2.3 miles) is a multi-purpose paved trail located along the East River Parkway in the Village of Allouez. Started in Allouez, the trail has since been extended through Green Bay, Bellevue, De Pere, Ledgeview, and beyond. Approximately 2.3 miles of this trail lies within the Village of Allouez. This trail is a popular destination for dog walkers, joggers, bikers, inline skaters, and nature viewers. Amenities present include:

- Benches
- Fishing piers
- Trail distance markers



Other Recreation Facilities:

Fox River State Trail (2.90 miles) is a paved trail following the Wisconsin Central Limited Railroad corridor along the eastern shore of the Fox River in Green Bay, Allouez, and De Pere, ending in Greenleaf. The entire trail is 25 miles, but 2.9 miles fall within the Village of Allouez.

This state trail is operated and maintained by the Brown County Parks Department.



Heritage Hill State Park (48.50 acres) was established in 1975 and uses a collection of original historic buildings and artifacts, along with a few replicas, to interpret the history of the area. The park is located on S Webster Avenue along the east bank of the Fox River. Heritage Hill State Park contains:

- Historic and replica interpretive structures
- Visitor center with restrooms
- Event area
- Food service building
- Off-street parking



St. Francis Park (3.4 acres), the only Brown County Park within the Village of Allouez, is located in the northwest portion of the village located along the shore of the Fox River. Facilities include:

- Shelter with restrooms
- Exercise stations
- Picnic tables
- Gazebo
- Paved trails


Designed to serve users of the Fox River State Trail, this park is accessible only from the trail.

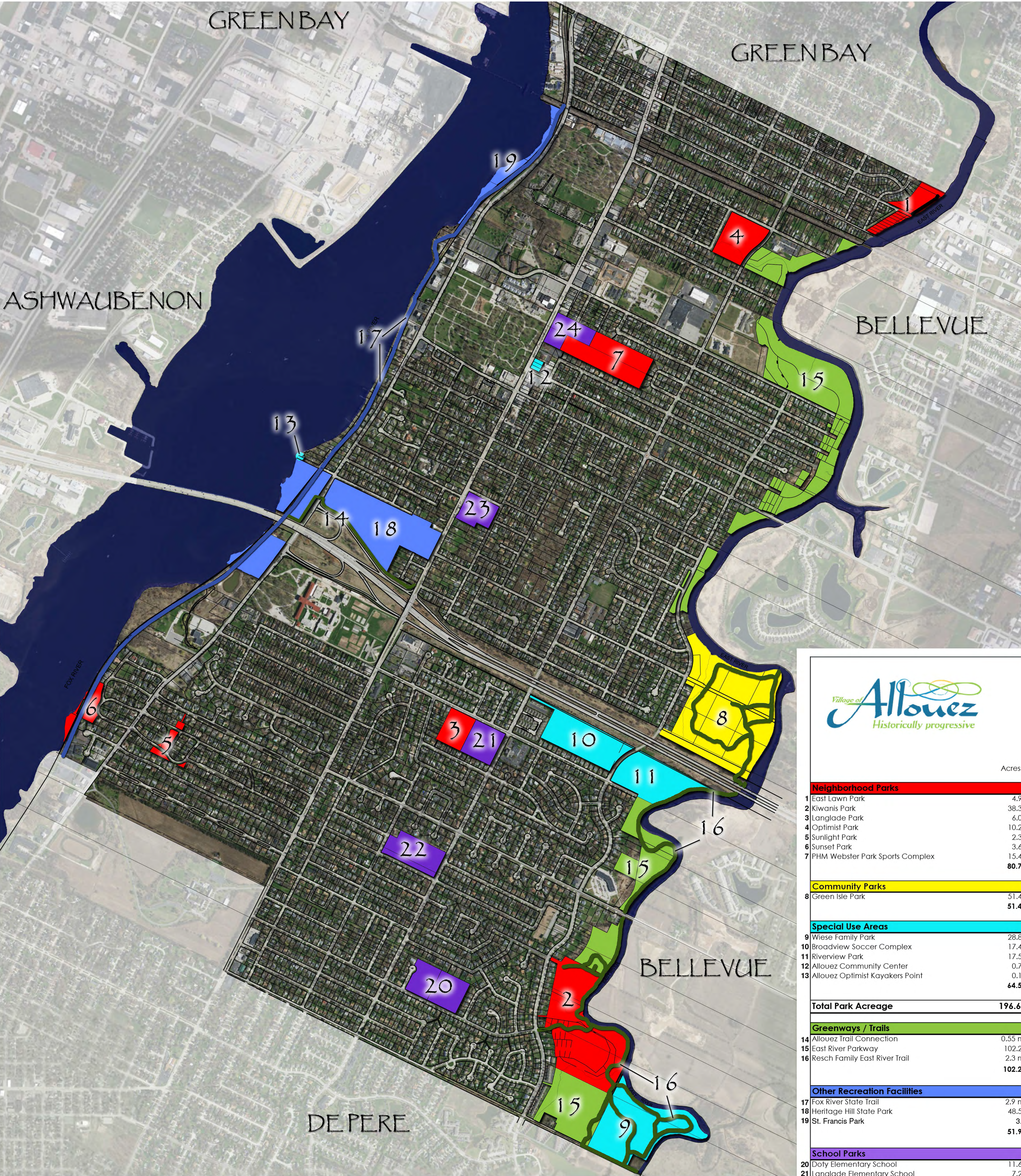


School Parks:

Doty Elementary, Langlade School, Resurrection Catholic, St. Matthews Catholic, Webster Elementary

Village of Allouez Park Matrix

<div></div> <div>Acres</div>		Passive Areas							Active Games						Hard Surfaced Courts			Seasonal		Special	Service						
		Benches	Boat / Canoe Launch	Grills	Nature Area / Nature Trails	Open Play Space	Paved Trails	Picnic Tables	Playgrounds	Disc Golf	Soccer	Football	Softball	Baseball	Volleyball Courts	Basketball	Tennis	Pickleball	Skating Rink/Hockey	Fishing Area	Event Area	Shelter / Restrooms	Concession Stand	Drinking Water	Off-Street Parking	Gazebo	
Neighborhood Parks																											
East Lawn Park	4.90		X			X	X	X	X				1			X	X					X			X		
Kiwanis Park	38.30	X				X	X	X	X		3					X	X	X		X		X		X	X		
Langlade Park	6.00					X		X	X			1				X	X		X			X			X		
Optimist Park	10.20	X				X		X	X			1										X	X	X	X		
Sunlight Park	2.30	X				X		X	X																		
Sunset Park	3.60	X				X	X	X																			
PHM Webster Park Sports Complex	15.40	X				X		X	X			1		6		X	X	X				X	X	X	X		
80.70																											
Community Parks																											
Green Isle Park	51.40	X			X	X	X	X	X		1		1	1	X	X	X		X	X	X	X	X	X	X	X	
51.40																											
Special Use Areas																											
Wiese Family Park	28.80	X				X	X	X	X		X	3								X					X	X	
Broadview Soccer Complex	17.40										5											X	X	X	X		
Riverview Park	17.50	X				X	X	X				5								X		X	X	X	X		
Allouez Community Center	0.70																										
Allouez Optimist Kayakers Point	0.10		X																			X		X	X		
64.50																											
Total Park Acreage		196.60																									
Greenways / Trails																											
Allouez Trail Connection	0.55 mi																										
East River Parkway	102.20					X	X															X			X		
Resch Family East River Trail	2.3 mi	X					X																				
102.20																											
Other Recreation Facilities																											
Fox River State Trail	2.9 mi						X																				
Heritage Hill State Park	48.50																					X			X		
St. Francis Park	3.4						X	X														X				X	
51.90																											
School Parks																											
Doty Elementary School	11.60								X		2					X									X		
Langlade Elementary School	7.20								X							X									X		
Resurrection Catholic	9.8								X		1																
St. Matthews Catholic	5.90								X																		
Webster Elementary School	6.30								X							X									X		
40.80																											
Total Other Recreation Facilites & Schools		194.90																									

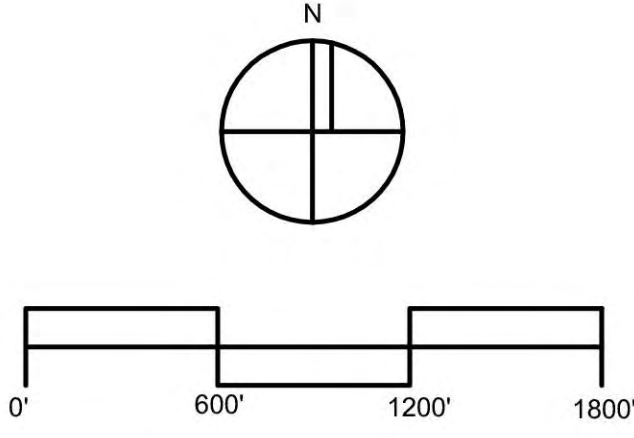


Village of Allouez Historically progressive	
Acres	
Neighborhood Parks	
1 East Lawn Park	4.90
2 Kiwanis Park	38.30
3 Langlade Park	6.00
4 Optimist Park	10.20
5 Sunlight Park	2.30
6 Sunset Park	3.60
7 PHM Webster Park Sports Complex	15.40
	80.70
Community Parks	
8 Green Isle Park	51.40
	51.40
Special Use Areas	
9 Wiese Family Park	28.80
10 Broadview Soccer Complex	17.40
11 Riverview Park	17.50
12 Allouez Community Center	0.70
13 Allouez Optimist Kayakers Point	0.10
	64.50
Total Park Acreage	
	196.60
Greenways / Trails	
14 Allouez Trail Connection	0.55 mi
15 East River Parkway	102.20
16 Resch Family East River Trail	2.3 mi
	102.20
Other Recreation Facilities	
17 Fox River State Trail	2.9 mi
18 Heritage Hill State Park	48.50
19 St. Francis Park	3.4
	51.90
School Parks	
20 Doty Elementary School	11.60
21 Langlade Elementary School	7.20
22 Resurrection Catholic	9.8
23 St. Matthews Catholic	5.90
24 Webster Elementary School	6.30
	40.80
Total Other Recreation Facilities & Schools	
	194.90



3317 BUSINESS PARK DRIVE
STEVENS POINT, WI 54482
PROJECT #: 15.036
DATE: 9-16-2015

VILLAGE OF ALLOUEZ PARK LOCATION MAP



Current Conditions

There are 13 Park sites and Special Use areas in Allouez, a green parkway, and two trails along with 8 additional outdoor recreational facilities owned by others. The parks are distributed throughout the community based on land use and development changes, although due to topography, most of the greenways, trails, and the largest parks lay along the East River.

Determining if community open space needs are being met can be a challenging task. The process is often not methodical and depends heavily on input from community residents, officials, and staff. The best guide available for use in this plan update includes standards from the National Recreation and Park Association (NRPA). These standards represent minimum goals and are not applicable to all locations universally. It is also important to understand each community has unique social, cultural, economic, and geographic factors that may limit the legitimacy or extent of the standards being applied.

Recreation Standards

Jurisdictional Standards

- Recreational Lands Provided by the State-----70 acres/1,000
- Recreational Lands Provided by the County-----15 acres/1,000
- Recreational Lands Provided by the Local Community-10 acres/1,000
- Recreational Lands Provided by the Private Sector----- 5 acres/1,000

Local communities should provide between 7 and 10.5 acres per 1,000 persons.

- As of the 2010 census, the Village of Allouez currently provides 14.07 acres of park, recreation, and open space lands per 1,000 residents.

Allouez Comparison to NRPA Specific Standards

Park Type	Acres per 1,000 residents	Allouez Park Acreage per 1,000 residents
Community Parks	5 - 8 acres	5.77 acres
Neighborhood Parks	1 - 2 acres	3.68 acres
Mini-Parks	0.25 – 0.5 acres	00 acres

Regional Green Space Comparison

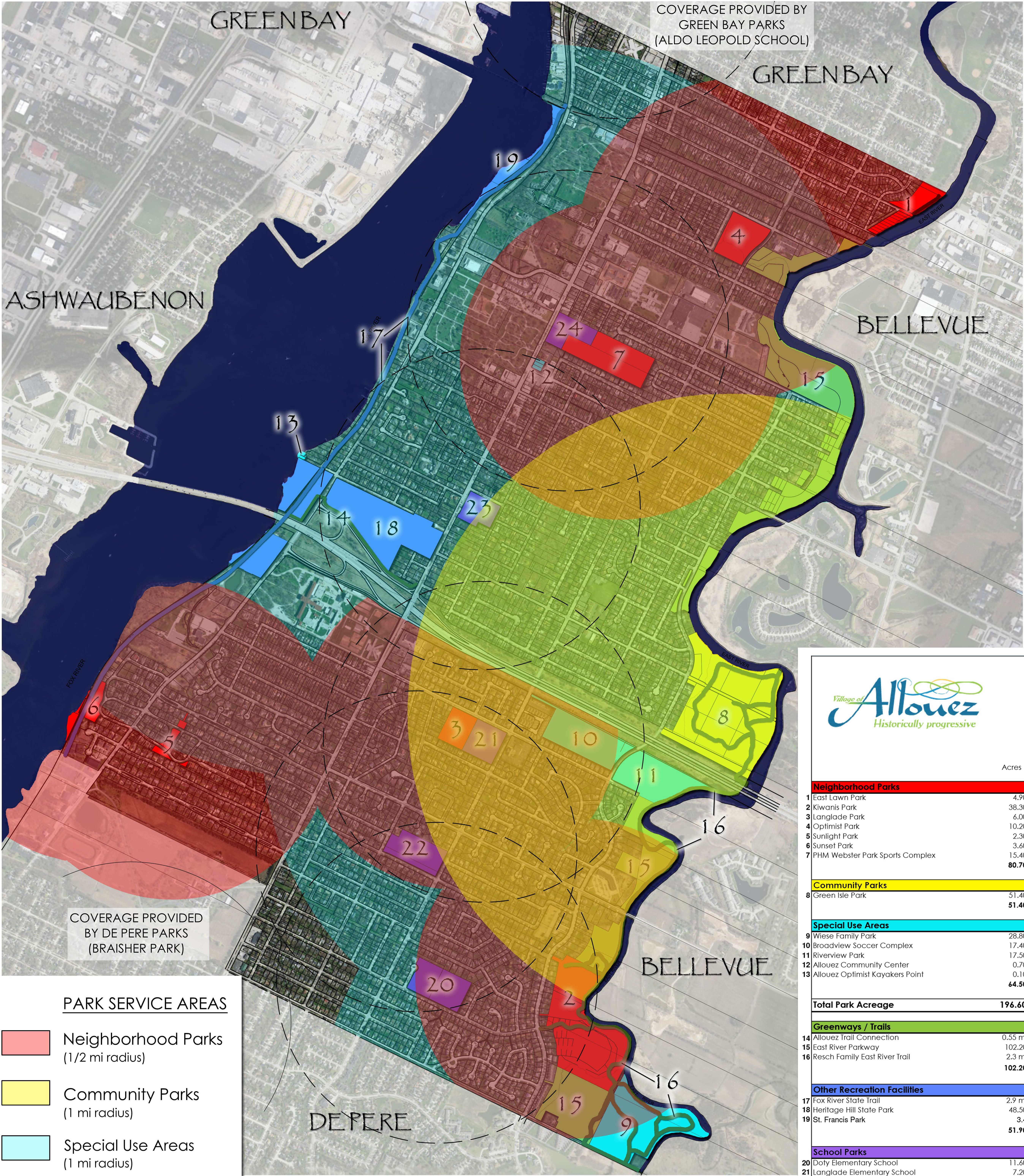
Neighboring communities were contacted for actual populations and green spaces.

Community	Population (Approx.)	Total Park Acreage	Acres Per 1,000 Population (7-10.5 Acres Per 1,000 NPRA Standard)
Allouez	13,500	196.6	14.56
Ashwaubenon	16,954	300	17.69
Bellevue	14,742	151	10.24
Chilton	3,964	54	13.62
De Pere	23,419	443	18.92
Green Bay	105,809	1573	14.87
Kimberly	6,464	235	36.36
Little Chute	10,454	86	8.23
Neenah	25,501	367	14.39
New London	7,085	323	45.59
Oshkosh	66,083	333	5.04
Shawano	9,263	300	32.39
Stevens Point	26,748	700	26.17
Two Rivers	12,639	229	18.12
Waupaca	6,048	236	39.02
Regional Average		21.01 Acres per 1,000 residents	

Service Area Evaluation

While demographics, the density of population, and specific park uses may dictate the actual service and use of a specific park, service areas can also be decided by park classification. The following service area map provides service area radii for each existing park type. Park service radii have been utilized per the NRPA standards.

The following Park Service Map represents that adequate coverage for a majority of the residential areas exists within the Village. Furthermore, adjacent parks within De Pere and the City of Green Bay provide use to Village residents whom live in close proximity.



PARK SERVICE AREAS

- Neighborhood Parks (1/2 mi radius)
- Community Parks (1 mi radius)
- Special Use Areas (1 mi radius)
- School Neighborhood (1/2 mi radius)



Neighborhood Parks

	Acres
1 East Lawn Park	4.90
2 Kiwanis Park	38.30
3 Langlade Park	6.00
4 Optimist Park	10.20
5 Sunlight Park	2.30
6 Sunset Park	3.60
7 PHM Webster Park Sports Complex	15.40
	80.70

Community Parks

8 Green Isle Park	51.40
	51.40

Special Use Areas

9 Wiese Family Park	28.80
10 Broadview Soccer Complex	17.40
11 Riverview Park	17.50
12 Allouez Community Center	0.70
13 Allouez Optimist Kayakers Point	0.10
	64.50

Total Park Acreage

196.60

Greenways / Trails

14 Allouez Trail Connection	0.55 mi
15 East River Parkway	102.20
16 Resch Family East River Trail	2.3 mi
	102.20

Other Recreation Facilities

17 Fox River State Trail	2.9 mi
18 Heritage Hill State Park	48.50
19 St. Francis Park	3.4
	51.90

School Parks

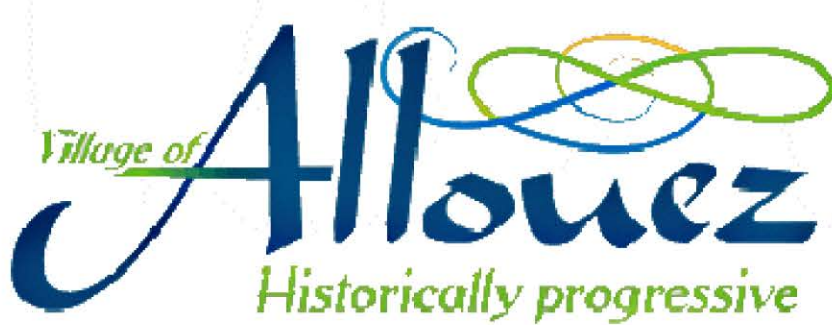
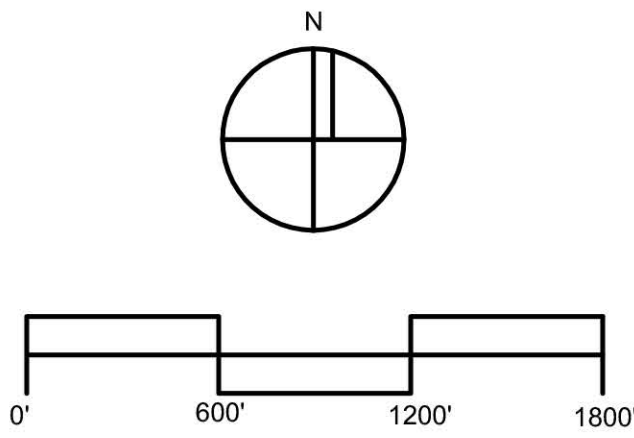
20 Doty Elementary School	11.60
21 Langlade Elementary School	7.20
22 Resurrection Catholic	9.8
23 St. Matthews Catholic	5.90
24 Webster Elementary School	6.30
	40.80

Total Other Recreation Facilities & Schools 194.90



3317 BUSINESS PARK DRIVE
STEVENS POINT, WI 54482
PROJECT #: 15.036
DATE: 9-16-2015

VILLAGE OF ALLOUEZ
SERVICE AREA MAP



Future Park Lands

Many planning resources and documents encourage municipalities and planners to forecast and anticipate growth and community needs so that the municipality will be ready when the need for future park and recreation areas arises. National Recreation and Park Association (NRPA) guidelines are helpful in suggesting what type of parks may be warranted, however actual user group requirements, community needs, and population density usually determine the actual park type and specific facilities developed.

It is highly unlikely, due to the current and anticipated needs, park service area coverage, consistent population, and adjacent physical boundaries, that the Village of Allouez will acquire future park lands in the near future. Future facilities may be added to existing parks as represented in the proposal section of this document. Furthermore, public parcels may be acquired to enhance the Village image and or provide public open spaces as represented in the Village's corridor study, referred to in the General Recommendations section page 43.